



# Guideline Public Company Comps Tool

A complete set of defensible public comps with financials.

\$1,595/Up to 5 users per year

\$1,025/Single user per year

Put the Guideline Public Company Comps Tool to work for you – it's fast and current. Instantly access complete financial statements, financial ratios, and multiples for comparable companies – and then easily save your comps or export your results to Excel. In addition, an exclusive feature provides suggested companies that come from those that were used in sets of guideline comparable companies in fairness opinions, as well as similar companies from the same industry group. For those that want to pull data directly into your Excel models, an **optional Excel add-in is available**. Contact BVR's sales team for more info at [sales@bvresources.com](mailto:sales@bvresources.com).

## Benefits of BVR's Guideline Public Company Comps Tool:

- Search, export, and compare with confidence—Pull complete financial statements, financial ratios, and multiples for comparable guideline public companies on U.S. exchanges for any selected time period.
- Compare to any other tool—Don't just take our word for it, put the BVR GPCCT side by side with the numerous other platforms out there. You'll find just as much functionality, the highest-quality data
- Identify additional comps—Get suggested companies that come from those that were used in sets of guideline comparable companies in fairness opinions, filed by the leading valuation firms and investment banks, that were accepted by the SEC. Read more about this exclusive feature on our website.

**Year Introduced at BVR:** 2020

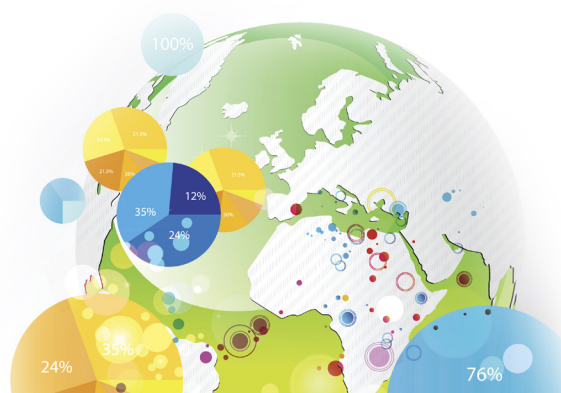
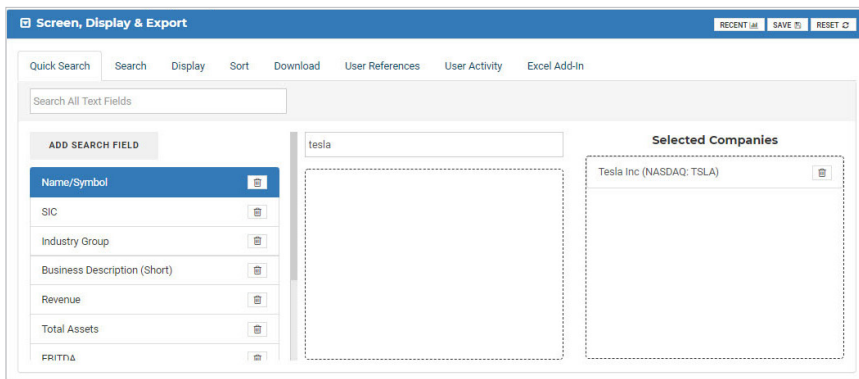
**Delivery Method:** HTML and Excel

**Product Updated:** Daily

**Number of companies covered:**  
Public company fundamentals from all firms that file 10-Ks and 10-Qs with the SEC and stock price data from US exchanges

**Source of product information:**  
SEC and U.S. stock market

## Easily search the tool with several data points:



# Guideline Public Company Comps Tool

A complete set of defensible public comps with financials.

Peer Group | Income Statement | Balance Sheet | Cash Flow | Metrics & Growth | Ratios | Multiples

Valuation Date: 03/27/2020 | Active As Of: 03/27/2020 | Period: TTM | Period: MOST RECENT

In Thousands of USD, except per share values and ratios

HIDE UNSELECTED | View: 10

Name/Symbol	SIC	Industry Group	Revenue	Total Assets	Market Cap	Enterprise Value	Enterprise Value/Revenue	Enterprise Value/EBITDA	Price/Revenue	Price/Earnings
General Motors Co (NYSE: GM)	3711	Auto Manufacturers - Major	\$397,171,000	\$228,037,000	\$52,667,400	\$128,351,400	0.32	6.09	0.13	7.82

## EASY SEARCH

Search by company name/ticker or by any other relevant field to identify comparables.

Peer Group | Income Statement | Balance Sheet | Cash Flow | Metrics & Growth | Ratios | Multiples

Valuation Date: 03/27/2020 | Active As Of: 03/27/2020 | Period: TTM | Period: 2017 Q4, 2019 Q4, 2018 Q4

In Thousands of USD, except per share values and ratios

HIDE UNSELECTED | View: 10

	General Motors Co Q42019 12/31/2019	General Motors Co Q42018 12/31/2018	General Motors Co Q42017 12/31/2017	Tesla Inc Q42019 12/31/2019	Tesla Inc Q42018 12/31/2018	Tesla Inc Q42017 12/31/2017
Operating Revenue	\$397,171,000	\$427,143,000	\$145,588,000	\$24,578,000	\$21,461,000	\$11,759,000
Other Revenue						
Revenue	\$397,171,000	\$427,143,000	\$145,588,000	\$24,578,000	\$21,461,000	\$11,759,000

## EXPORT OPTIONS

Selectively export only the data you choose.

Peer Group | Income Statement | Balance Sheet | Cash Flow | Metrics & Growth | Ratios | Multiples

Valuation Date: 04/13/2020 | Active As Of: 04/13/2020 | Period Type: TTM | Period: 4Q 2017, 4Q 2019, 4Q 2018

In Thousands of USD, except per share values and ratios

HIDE UNSELECTED | View: 10

	Median	Mean	Min	Max	25th Pctl	75th Pctl	SD	CoV	General Motors Co 4Q 2019 12/31/2019	General Motors Co 4Q 2018 12/31/2018	General Motors Co 4Q 2017 12/31/2017	Tesla Inc 4Q 2019 12/31/2019	Tesla Inc 4Q 2018 12/31/2018	Tesla Inc 4Q 2017 12/31/2017
Enterprise Value/Revenue	2.01	2.35	0.80	5.08	0.84	3.29	1.62	0.69	0.93	0.80	0.81	3.35	3.09	5.08
Enterprise Value/EBITDA	6.06	18.35	5.24	39.19	5.71	35.57	15.58	0.85	6.06	5.71	5.24	35.57	39.19	
EV/EBIT	16.79	15.55	11.47	18.38	14.13	17.58	2.95	0.19	18.38	16.79	11.47			
EV/NOPAT	28.16	181.62	25.99	490.70	27.07	259.43	218.56	1.20	25.99	28.16	490.70			
EV/Operating Cash Flow	8.50	17.80	6.82	34.28	7.75	31.65	12.42	0.70	8.50	7.75	6.82	34.28	31.65	
EV/Free Cash Flow														
EV/Next Year Revenue														

## MULTIPLES

Quickly view the summary statistics for your comparable company set.

